
2nd St Neots Scout Group



Welcome Pack

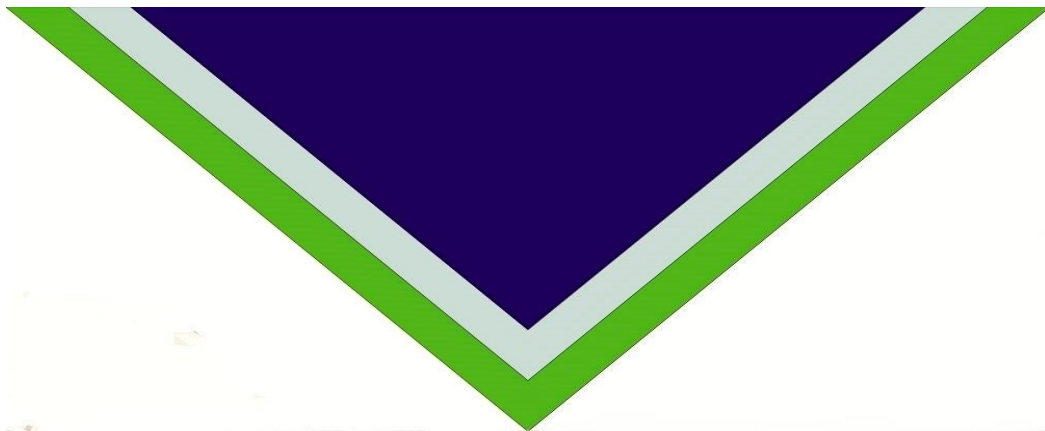


Table of Contents

Welcome	3
Scouting	3
The Group and Sections	4
The Promise	4
Uniform	5
Badge Work	5
Subscriptions	6
Trips and Activities	6
Child Protection and Health & Safety	7
Photographs / Video Footage	9
Further Information	9
Group Contacts	10
Beaver Scouts Uniform and Promise	11
Cub Scouts Uniform, Promise and Law	12
Scouts Uniform, Promise and Law	13
Gift Aid Declaration Form	14
Photographic & Video Footage Permission Form	15



Welcome

Your child has expressed a wish to join us at the 2nd St Neots Scout Group. This information pack will provide you with basic information regarding Scouting and the Group. There are a number of forms at the end of this pack that we would appreciate you filling in and returning to us. The purpose and reason for these forms is explained within the pack.

Scouting

The Scout Movement is a global co-educational youth organisation, the largest in the world, with over 28 million Members in 216 countries and territories.

In the UK Scouting is organised through The Scout Association and which has a clear purpose:

To help young people achieve their full physical, intellectual, social and spiritual potential as individuals, as responsible citizens and as Members of their local, national and international communities.

The Scout Association offers everyday (and some more unusual!) adventure and activity to 412,619* young people across the UK.

Scouting is open to all young people aged 6 to 25 of every faith and background as long as they are prepared to make the promise. A number of variations of the promise are available to cover a range of faiths and nationalities.

There are also plenty of opportunities for adults to become involved as Leaders, Assistants, and Administrators and as Group Supporters. If you would like to be involved with our Scout Group then please contact one of the Groups Leaders.

As a member of our Group we hope and will endeavour to ensure that your child can help to make the world a better place. Scouting makes a positive contribution to society by helping young people to develop as active members of the community who:

- Are self reliant,
- Are caring,
- Are responsible,
- Show commitment.

However most importantly this continual personal development works best when the young people are working in partnership with adults. They do this by:

- Taking part in a variety of activities and new experiences,
- Exploring the outdoors,
- Participating in teams,
- Taking responsibility,
- Taking part in the Progressive Training Programme

The Programme is a continuous progression of training, activities and awards that covers everything that young people do in Scouting from the age of **6 to 25**.



Whilst the activities they take part in will depend on their age, each Section gives young people the opportunity to learn by doing. The main programme areas are:

- Outdoor and Adventure
- Global
- Community
- Fit for Life
- Creative and Beliefs
- And Attitudes

Leaders are trained to deliver this programme, ensuring our young people stay safe while they enjoy themselves and learn.

The Group and Sections

The Group currently consists of a beaver colony and a cub pack, that currently is being run together on a Monday evening at the Roundhouse school, Loves Farm Estate.

- **Beavers** 6 to 8 years old meet between 5:30pm & 6:45pm
- **Cubs** 8 to 10 ½ years old, meet between 5:15 & 6:45pm
- **Scouts** 10 ½ to 14 years old, meet between 6:45 & 8:45

With all sections there is some flexibility in age ranges.

After the scout troop they would then feed into a St Neots area Explorer Scout Unit, however all group members that progress to the St Neots area Explorer Unit are more than welcome to return to the group as "Young Leaders" with any of the sections.

The Group can always benefit from assistance, either as a Leader, helper or a member of the Group's Executive or even as occasional specialist skills instructor, passing on skills or hobbies. If you would like to help, in any capacity, please contact us.

The Promise

Our Scout Group is an "open Group"; this basically means that as long as your Child meets the general requirements for membership of the Scout Association they are welcome within our Group.

To become a member of the Scout Association and our group your child will be asked to make a promise at an investiture ceremony. This would normally be undertaken on a Monday evening; however it can be carried out at any event. We would always try and make this a very special event for your child; however it is your child's investiture and would only be carried out when they were ready. Investitures may be delayed so that they could be carried out at a special event e.g. at camp. You, of course, would be more than welcome to witness this ceremony.

The promise that they make will be dependent on the section that they are joining. The general promise for each section is attached; the promise can, however, be altered in a number of ways to take into account religious beliefs; nationality and / or special needs.

In the promise your child will undertake to either "love God" or to do their "duty to God" (or their choice of deity). Whilst we are not attached to any particular religious body the Group does attend St George's service and the Remembrance Day parade once a year.

Their Leader can generally answer any questions that you or your child may have with regard to the promise.



Uniform

Details of uniform for each section, and the location of badges are attached.

On a Monday evening we would normally expect your child to attend in uniform from the waist up. However, for specific activities full or suitable uniform activity-wear may be more suitable. Guidance on the expected uniform for each activity would be provided with details of the proposed event or activity.

- **Beavers** Turquoise sweatshirt and Group neckerchief
- **Cub Scouts** Dark green sweatshirt and Group neckerchief
- **Scouts** Teal green smart shirt, Scout belt and Group neckerchief

The Scout Association produce dark blue uniform "activity" trousers. Navy blue coloured Regatta walking trousers are the same. For events where full uniform is required these activity / walking trousers or dark grey / black "school" type trousers / skirt would be more than adequate. For Scouts, full uniform also includes a brown leather Scout belt.

The Group neckerchief is Royal blue with a sky blue and green border. These are available from the Group.

For activity wear there is a choice of optional polo shirts, available in turquoise for Beaver Scouts and green for Cub Scouts and Scouts.

Badge Work

Members of all ages work towards attaining awards both in their chosen activities, and are awarded badges. From Circus Skills and Street Sports to Imagination and Public Relations, there is a wide range of choice of Activity Badges for all Sections. Hobbies that your child has can also be used to help both "activity badges" and progressive training awards.

These are generally awarded for trying new activities and doing their best at them for the younger sections whilst Scouts do have some badges that specific standards have to be met. Generally the effort needed to obtain the badge or the standard required increases as your child progresses through the sections. In addition though, there are six staged Activity Badges these have been designed to provide a unified approach throughout the Sections.

These staged Activity Badges are:

- Emergency Aid
- Information Technology
- Musician
- Swimmer
- Nights Away
- Hikes Away

All the Staged Activity Badges have 5 stages, with the exception of the last two. Nights Away has 12 and Hikes away has 6 stages. This means that a young person can gain whichever badge is appropriate to the level they have reached. It is possible, for example, for a Beaver Scout who is an excellent swimmer to gain a higher-level badge than a Scout who has just taken up the activity.



There are "Joining In" awards which are presented with the numbering indicating how many years the Member has regularly attended and participated in the balanced programme across the whole Scout Movement. Only the highest numbered badge is worn.

Each section has a number of Challenge Badges; these can either be done individually or in groups. On completion of a number of these your child can earn the relevant Chief Scouts Award, the highest award earned worn on their uniform.

- Beaver Scouts – Bronze Chief Scouts Award
- Cub Scouts – Silver Chief Scouts Award
- Scouts – Gold Chief Scouts Award

When your child is ready to move onto the next section there are moving on awards for each section.

Occasionally your child may be asked to undertake things at home to go towards badge-work or challenges being undertaken on a Monday evening.

Subscriptions

At the current time Subscriptions are different for the different sections and are due at the start of each term. The level of subscription can be confirmed with the section leaders.

The Subscriptions help to cover the cost of renting the school hall as well as things like badges and materials for activities carried out on a Monday evening. Some other activities such as trips away from base and camps, may incur extra costs. Investiture will incur a £5 charge to help towards the costs of Neckers and badges.

In addition during January we have to fulfil the Scout Associations census and pay Capitation for each member of the Group. Failure to pay this, either directly or through targeted fund raising, will result in our group not being allowed to partake in scouting activities, as Scout Insurance will not cover them.

If at any point paying for either subscriptions or for activities becomes an issue please speak to one of the Group's Leadership team.

We can claim the income tax paid on all the monies that are paid to us. This includes money paid for subscriptions, capitation and activity costs. This means that for every £1 paid to the Group we can claim 28p back from the Inland Revenue. This would allow us to claim £35.28 per child per year on subscriptions alone. In addition to being an easy fund raising method, it means that we can keep costs of activities as low as possible. To enable us to do this there is a "**Gift Aid Declaration**" form attached.

Trips and Activities

In order to supplement the Monday night meetings and to ensure that everyone has the best opportunities. There are very few activities that members of The Scout Association are actually banned from doing. Consequently if it is possible, to do something, and there is a large enough request to do something we will try to organise it.

However, when organising trips or activities we often have to impose a cut off date for responses. This is generally due to purchasing tickets, completing all of the necessary risk assessments and making arrangements with the "home contact" for the event.

These cut off dates will be strictly adhered to. Consequently if subsequent to your child being accepted on a trip or activity, if they are unable to attend please let us know as soon as possible.



Another cut off reason may be a number of people taking part. For instance, if we organised a "try canoeing" event and we could only take 10 members due to the number of available canoes. If we are informed that a number people who were booked on the activity were not going to turn up, their places could be offered to other members.

Group Discipline Guide Lines

We will operate a Card system for Bad or inappropriate behaviour a leader will issue a verbal warning to a member if this continues they will be entitled to issue a yellow card warning this will be reported to the adult collecting the member and the G.S.L.

If two of these cards are received in a school term the G.S.L. will write to the parents/ Guardians requesting the member not attend the next sectional meeting as a chance for reflection.

If there are two such incidents in a school year a meeting will be held between the parents / guardians, sectional leaders and the G.S.L. to discuss the future involvement of the member but ultimately this decision will be taken and implemented by the G.S.L.

Child Protection

The Scout Association's policies, rules, code of behaviour, advice on Child Protection and safety policy are there to ensure our young people stay safe whilst the Programme of activities that we provide is fun, exciting and challenging. Most importantly we must also make sure that all activities undertaken are safe.

It is the policy of The Scout Association (and therefore of the Group) to safeguard the welfare of all Members by protecting them from physical, sexual and emotional harm. The Scout Association is committed to:

- Taking into account in all its considerations and activities the interests and well-being of young people;
- Respecting the rights, wishes and feelings of the young people with whom it is working;
- Taking all reasonable practicable steps to protect them from physical, sexual and emotional abuse, and
- Promoting the welfare of young people and their protection within a relationship of trust.

All adults aged eighteen or over, no matter what their role or involvement within Scouting, are responsible for putting this policy into practice at all times.

All Leaders and regular helpers have been subjected to, and passed, an enhanced Criminal Record Bureau (CRB) disclosure. In addition all leaders have to pass a basic first aid qualification during their training.

However, accidents occasionally can happen, consequently in order to comply with The Scout Association's own health and safety policy's we require certain information regarding emergency contacts (next of kin, emergency contact numbers etc.). If this information changes e.g. change of address or phone number please let us know. A general information contact form is attached. During activities and trips this contact information, including parent or guardian contact information, will be collated and controlled by the event organiser. They will nominate someone to be the events nominated "contact". If it is necessary to contact you during the event it is likely to be this person who will contact you.



Further information and consent forms may be required for specific activities.

The Group can cope with members that have special needs, however we do need to know of any special requirements, allergies etc that your child may have.

All information provided is kept in complete confidence. It is normal for us to ask for a new form to be filled in when your child moves sections to ensure that we have up to date information. The only people outside of the Group to have access to any of this information would be a nominated "contacts" during trips or activities.

Safety and Welfare Policy

The group safety and welfare policy is available as a separate document.



Photographs / Video Footage

The various sections regularly take part in a wide range of activities, organised at a Group, District or County level. Many of these involve challenging activities, which the youngsters involved often like evidence to prove that they have taken part.

In addition, images of the youngsters enjoying themselves can be extremely useful for publicity purposes, internally (e.g. for use on the Group newsletter), externally (sent to local newspapers, 'Scouting Magazine' (which is provided to Leaders in Scouting) etc.), and on display boards, group website etc.. Photographs and video footage of the youngsters in the activities may also be used as a training aid (both adult and youngsters) or as validation of adult training.

At Group events it is relatively easy for the Leaders in charge to take suitable and agreeable photographs of the children involved. At larger events such as District or County events, it is not necessarily possible for the Leader to dictate what photographs might be taken or the specific end use of the photographs. However as the photographs would be taken as part of a Scouting event they would need to comply with The Scout Association's Child Protection Policy, as would photographs or video images taken during Group events.

Please ask if you have any questions concerning this. If we wish to use photos for any other purposes we will seek your permission. There is a form at the rear of pack, please fill it in as appropriate, sign to say that you accept it and return.

Further Information

Further details regarding the uniform, badge requirements and other sectional information can be found on the Internet at <http://scouts.org.uk/what-we-do/>, the web address is provided with contact details for each section in this pack.



Group Contacts

Name: Andrew Grantham Group Scout Leader

Mobile Phone number: 07786148707 Home Phone number: 01480 385820

Email: andrew.grantham@ntlworld.com

Name: Philippa and Sarah - Beaver Scout Leaders

Contact through Web page: <http://2ndstneotsscouts.scoutsites.org.uk/>

Name: Kirsty, Jacqui and Brett - Cub Scout Leaders

Contact through Web page: <http://2ndstneotsscouts.scoutsites.org.uk/>

Name: Danny, Darren, Mark and Andrew - Scout Leaders

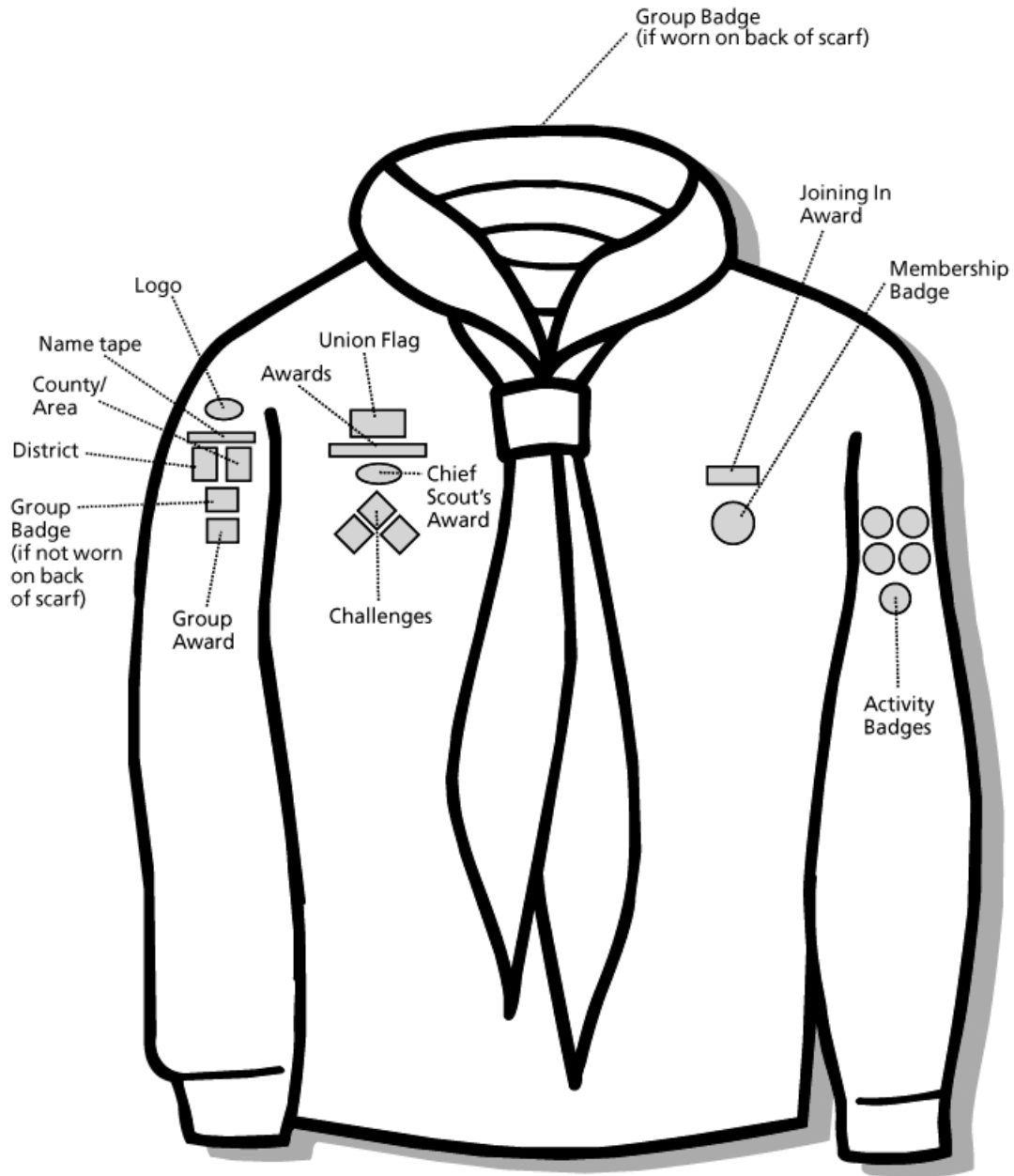
Contact through Web page: <http://2ndstneotsscouts.scoutsites.org.uk/>

Generic Scouting Information

<http://www.scoutbase.org.uk>



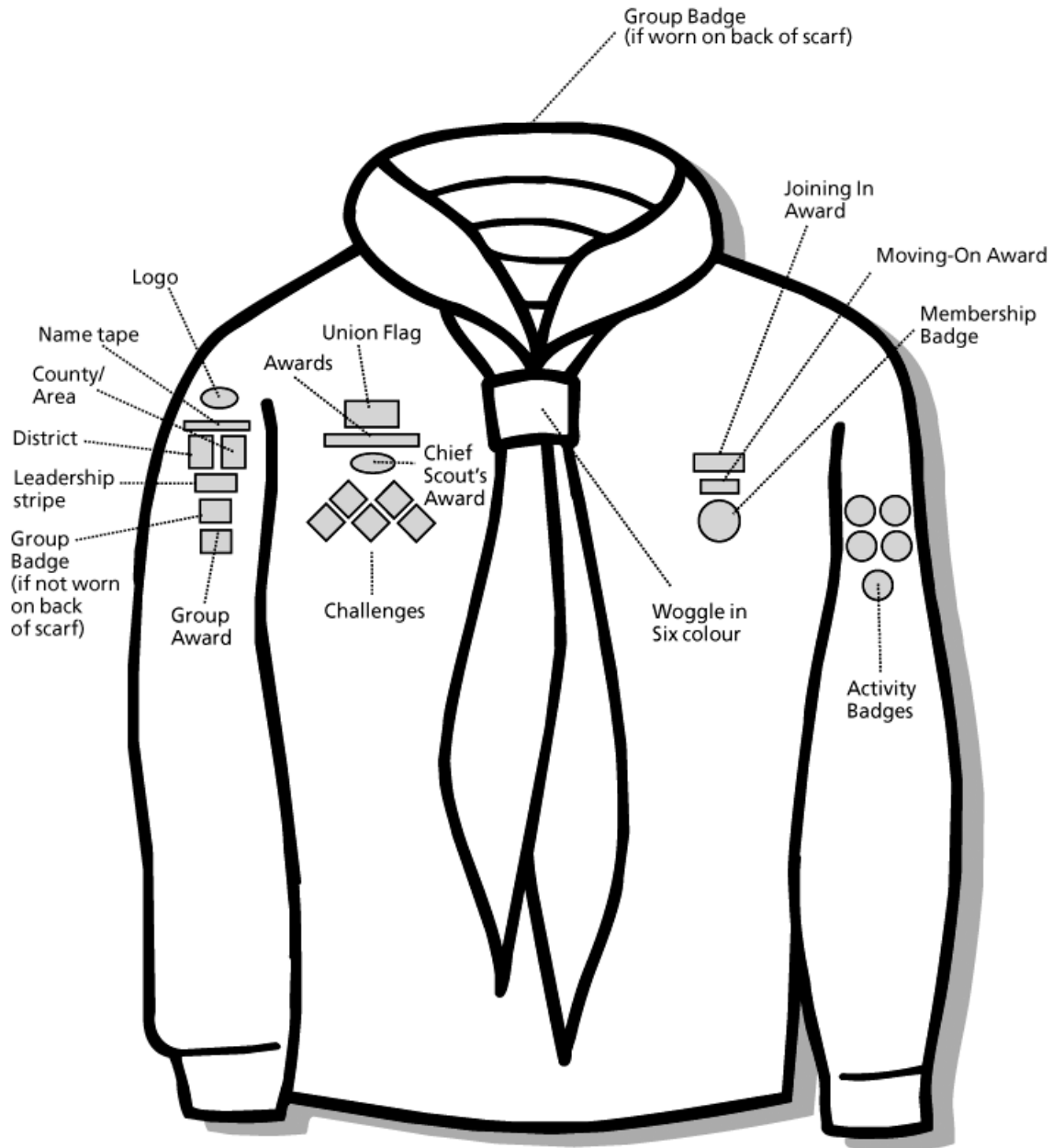
Beaver Scouts Uniform and Promise



The Beaver Scout Promise

I promise to do my best
To be kind and helpful
And to love God.

Cub Scouts Uniform, Promise and Law



The Cub Scout Promise

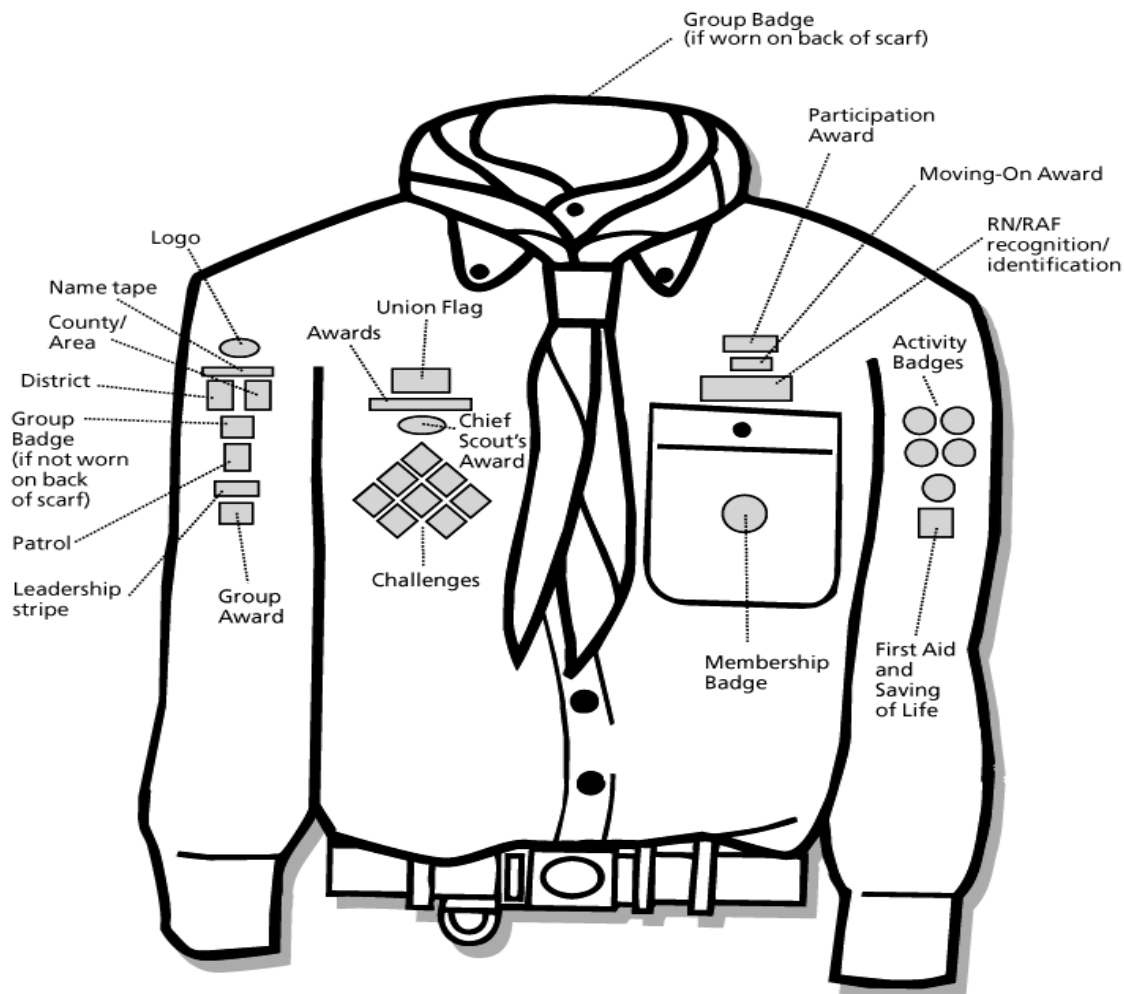
I promise that I will do my best
 To do my duty to God and to the Queen,
 To help other people
 And to keep the Cub Scout Law

The Cub Scout Law

Cub Scouts always do their best
 Think of others before themselves
 And do a good turn every day.



Scouts Uniform, Promise and Law



The Scout Promise

On my honour, I promise that I will do my best,
To do my duty to God and to The Queen,
To help other people,
And to keep the Scout Law

The Scout Law

- 1) A Scout is to be trusted.
- 2) A Scout is loyal.
- 3) A Scout is friendly and considerate.
- 4) A Scout belongs to the worldwide family of Scouts.
- 5) A Scout has courage in all difficulties.
- 6) A Scout makes good use of time and is careful of possessions and property.
- 7) A Scout has self-respect and respect for others.

Gift Aid Declaration Form

Gift Aid declaration – for past, present & future donations

Name of charity or Community Amateur Sports Club

2nd St. Neots Scout Group

Please treat as Gift Aid donations all qualifying gifts of money made Today, in the past 4 years and in the future.

I confirm I have paid or will pay an amount of Income Tax and/or Capital Gains Tax for each tax year (6 April to 5 April) that is at least equal to the amount of tax that all the charities or Community Amateur Sports Clubs (CASCs) that I donate to will reclaim on my gifts for that tax year. I understand that other taxes such as VAT and Council Tax do not qualify. I understand the charity will reclaim 28p of tax on every £1 that I gave up to 5 April 2008 and will reclaim 25p of tax on every £1 that I give on or after 6 April 2008.

Donor's details

Title _ _ _ _ _ First name or initial(s) _ _ _ _ _

Surname _ _ _ _ _

Full home address _ _ _ _ _

_ _ _ _ _

_ _ _ _ _

_ _ _ _ _

_ _ _ _ _ Postcode _ _ _ _ _

Date _ _ _ _ _

Signature _ _ _ _ _

Please notify the charity or CASC if you:

Want to cancel this declaration

Change your name or home address

No longer pay sufficient tax on your income and/or capital gains.

If you pay Income Tax at the higher or additional rate and want to receive the additional tax relief due to you, you must include all your Gift Aid donations on your Self-Assessment tax return or ask HM Revenue and Customs to adjust your tax code.



Photographic & Video Footage Permission Form

I acknowledge that during the course of scouting events (weekly meetings, days out, camps, etc) photographs and / or video footage may be taken, and could be used for any of the purposes outlined below.

I also acknowledge that on larger events photographs and / or video footage may be taken that the Group's Leaders have no control over.

I understand that all photographs and / or video footage taken by or on behalf of Scouting events will comply with The Scout Associations Child Protection Policy. However, the Group has no control over the photographs and / or video footage taken by Third Parties and their proposed end use for the photographs and / or video footage.

Use	I give my permission	I withhold my permission
To be provided to you after events		
Recruitment of Members or Leaders		
As a training aid and validation of Leader training		
Internal publicity (Group Newsletter, promotion of future events to members of the Group etc.)		
External publicity (submission to Local newspapers, 'Scouting Magazine' Website etc)		
To be shown at Group events / on the Groups notice boards in the Community Centre		

Signature:

Date:

Name (Printed)